

M&V 2.0: Modern Measurement

Agenda

Topics for discussion

1 M&V 2.0 Overview

2 Activities in Other States

3 Case Studies

4 NH Applications

What is M&V 2.0?



A defining criterion for automated M&V software is that it continuously analyzes data as it becomes available.

New York Dept. of Public Service, EM&V Guidance, Nov 2016

Floating Names

M&V 2.0

EM&V 2.0

Advanced
M&V
(NY REV)

Automated
M&V
(NEEP)

ICT-Enabled
EM&V
(ACEEE)

Research from NEEP and ACEEE

Estimated savings reductions from automated consumption data analysis can provide rapid feedback to programs whether or not this analysis is used as the final evaluated savings. Such rapid feedback is useful whether it is provided as part of program delivery or as part of evaluation.

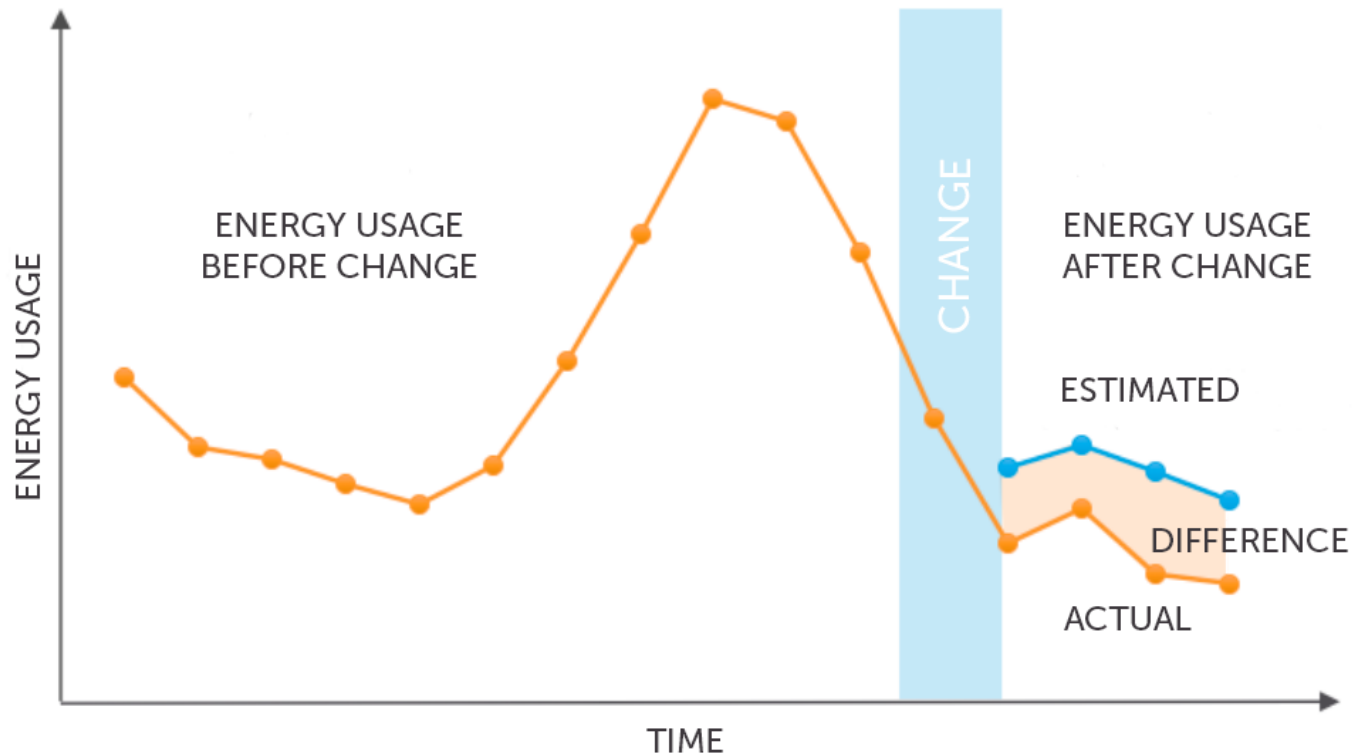


REGIONAL EVALUATION,
MEASUREMENT & VERIFICATION FORUM

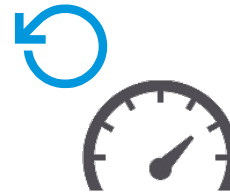
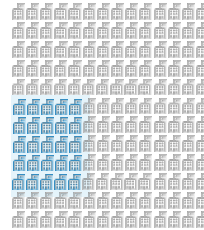
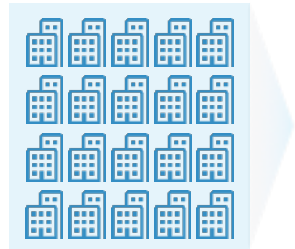
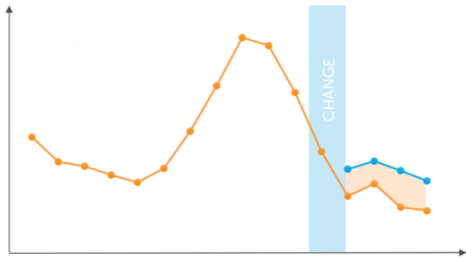
By incorporating [Information and Communication Technologies] ICT into the design and management of their services, program administrators and evaluators will be able to improve the effectiveness of their actions and reduce their operating costs.



How Does M&V 2.0 Work?



How Does M&V 2.0 Work?



Build weather-normalized models for each customer

Compare changes in usage for treated customers vs. overall population

Repeat analysis for all customers with each new addition of data

Generate dashboard of findings, analytics and actionable insights

Estimating Savings Continuously

- Home Energy Savers
- Dashboard
- Savings
- Explore

PROGRAM SAVINGS

156 ± 6.06 / 250 78% ± 3%

METERED (MWh)

REALIZATION RATE

63% ± 2% OF GOAL

71% OF GOAL

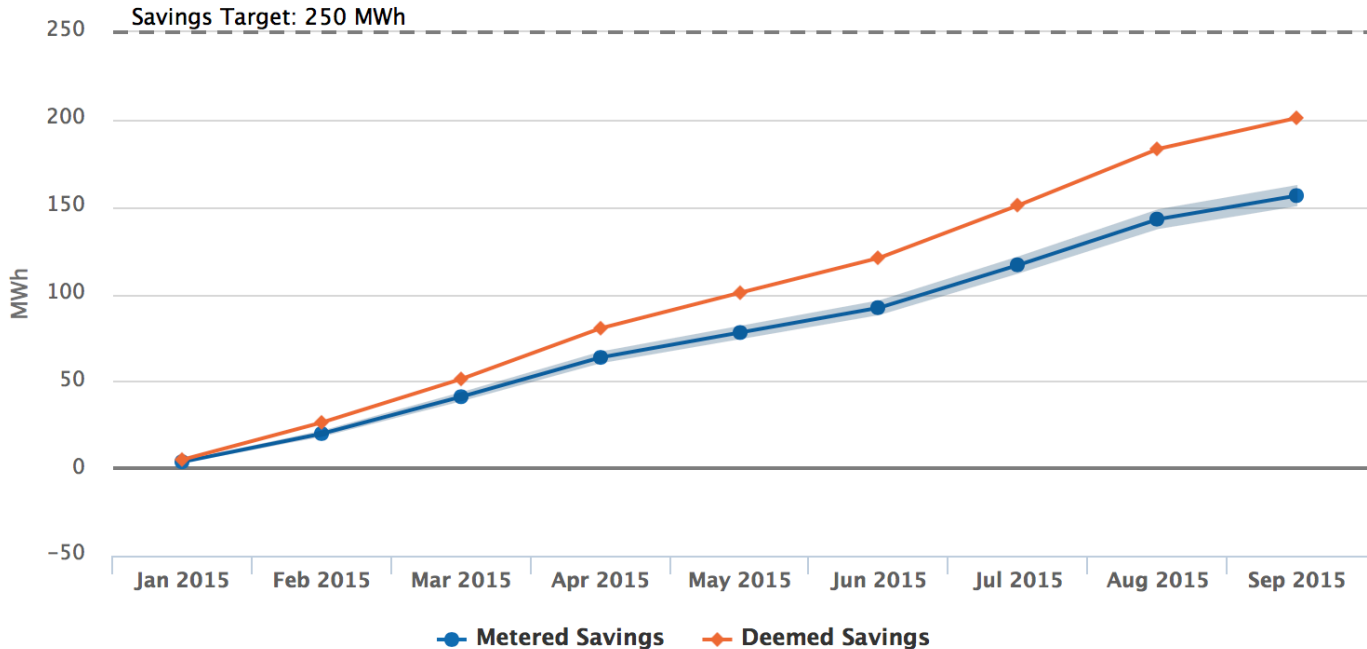
PROGRAM PROGRESS

1,485 / 2,100

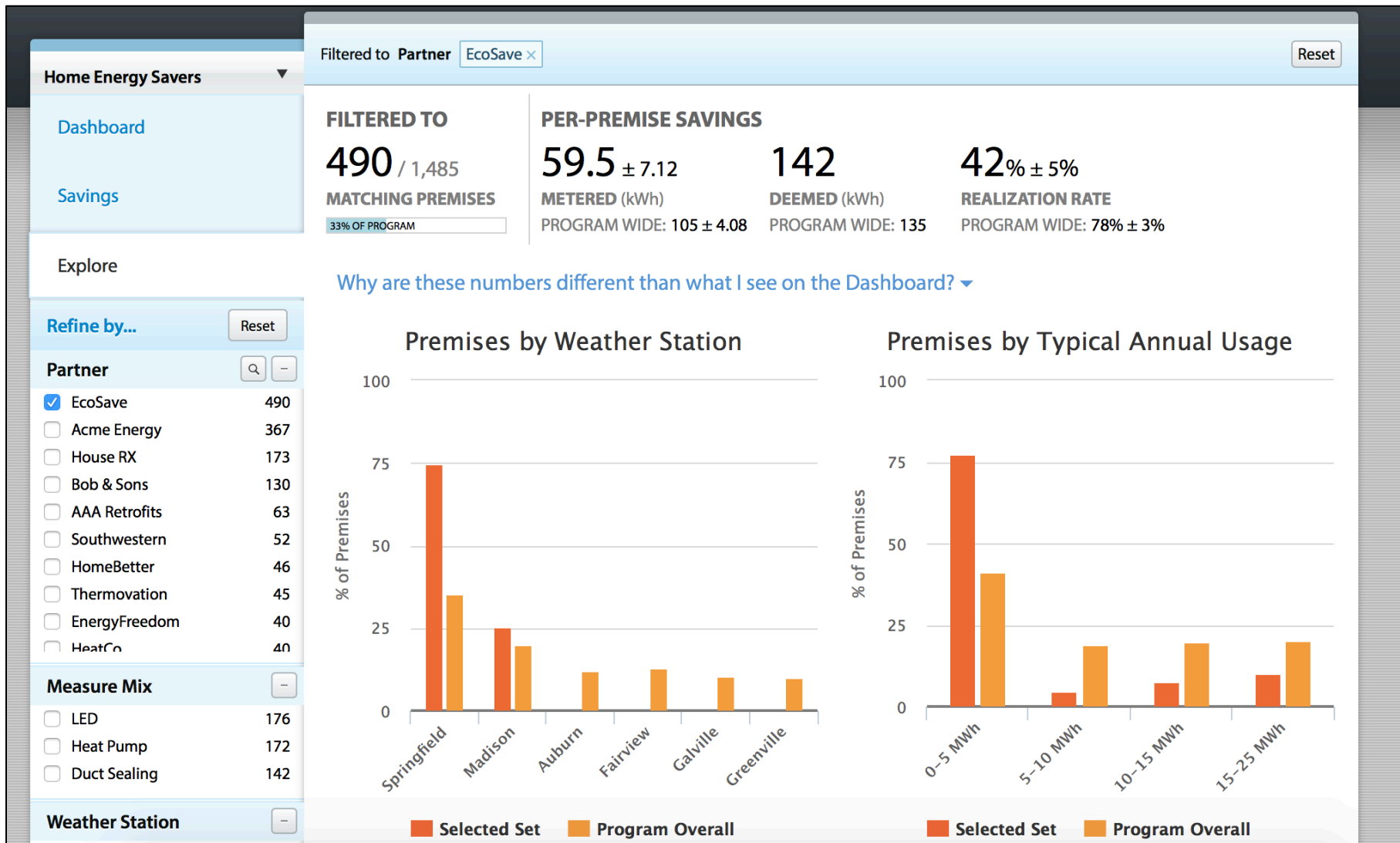
PREMISES TREATED

71% OF GOAL

Cumulative Savings by Project Month



Exploring Factors Impacting Savings



M&V 2.0: FAQ's

AMI or Interval data?

- 2.0 applications are meter agnostic and work with interval, monthly or bi-monthly meter data

10% of savings?

- A billing analysis with an M&V 2.0 approach can estimate savings down to 2-3%

Black box?

- EnergySavvy provides a written methodology to clients, evaluators and regulators. Same as done by traditional evaluators.

Replacing evaluation?

- M&V 2.0 tools enhance and support formal third party evaluation. They are not intended as a replacement.

What can M&V 2.0 do?

Capabilities offered by M&V 2.0 tools

- ❖ Updating deemed savings with local actual data
- ❖ Assessing persistence with continuous measurement
- ❖ Replacing deemed savings for ex-post M&V for certain programs
- ❖ Measuring “net” savings for certain programs*
- ❖ Providing process improvement data to program administrators
- ❖ Launching new pilots or estimating savings from HEMS (e.g. smart thermostats)
- ❖ Can provide independent analysis to evaluator and program administrator

*SEEACTION Impact Evaluation Guide, Large-scale consumption data analysis approaches. pg 5-4, 5-5

Where doesn't M&V 2.0 fit?

M&V 2.0 is not the best approach for all applications

- ❖ Artificial baselines require ex-post engineering adjustments to M&V 2.0 impact analysis
- ❖ M&V 2.0 cannot assess free ridership or spillover
- ❖ Not appropriate for certain program types (e.g. custom projects)
- ❖ Not designed for market studies or assessing penetration levels for certain technologies

M&V 2.0 Around the Country

M&V 2.0 In the States

State	M&V 2.0 Actions
NY	<p>2016: PSC orders incentives related to EE net savings are “tied to advances in EM&V that utilize direct customer information.”</p> <p>2016: EM&V Guidance “encourages” use of “Advanced M&V” for data collection and analysis for impact evaluation</p>
CA	<p>2015: Order requires “data collection strategies embedded in the program” and “internal performance analysis during deployment.”</p> <p>2015: law defaults to use of “normalized metered energy consumption” for M&V</p>
CT	<p>2015 Order directs portion of annual EM&V budget to “direct measurement and verification”</p> <p>2016 State receives DOE SEP grant for EM&V 2.0 pilots</p>
NM	<p>2016 Statewide RFP include optional scope for “M&V 2.0” solutions</p>
MO	<p>In progress: Report on how EM&V 2.0 can support deemed savings updates for statewide TRM</p>

Basic Case Study

Does it work?

Is it accurate?

How long does it take?

Can M&V 2.0 match the existing results in less time w/ bimonthly data?



1,100 Homes in
HPD program

Reproduce
evaluation results
with M&V 2.0



Reliable estimate of
performance 7
months into program



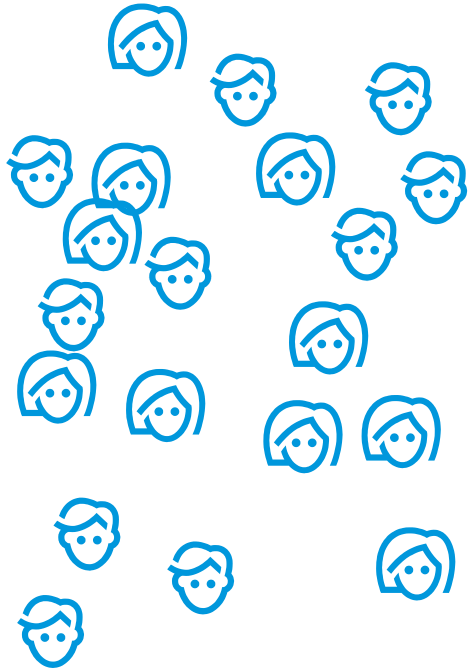
6%
margin of error

Case Study on Faster Feedback

How can M&V 2.0 optimize programs?



Case Study: Arizona Public Service



Challenge

Managing a large network of contractors

Solution

Monitor performance of individual contractors

60+ independent contractors

Continuous monitoring of programs and contractor performance

aps Case Study: Contractor Scorecard



Challenge

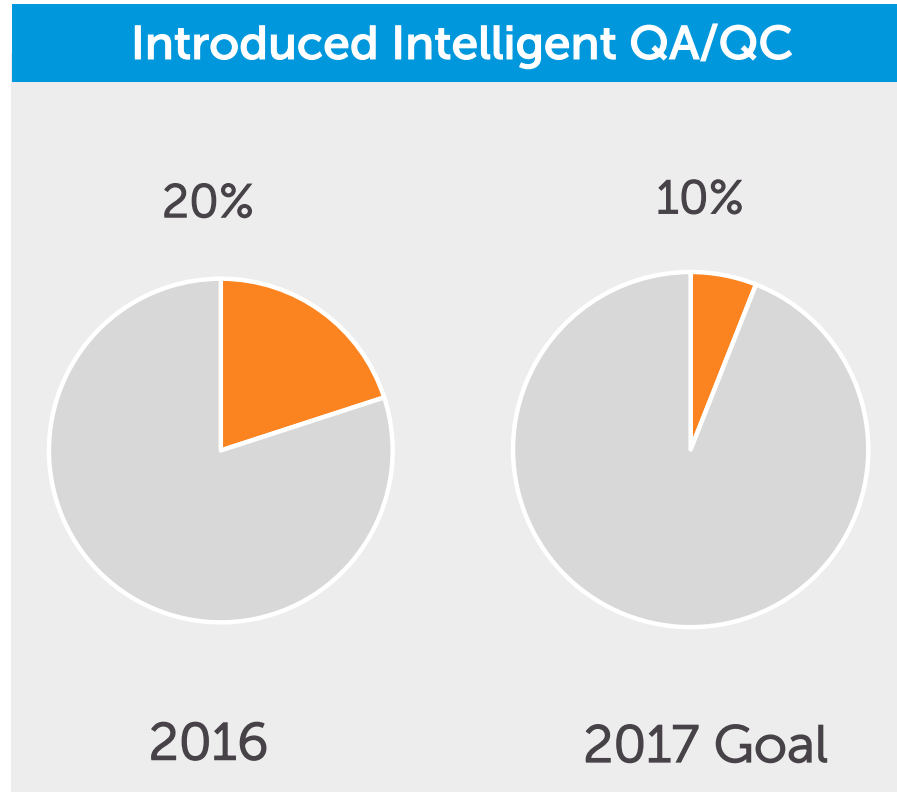
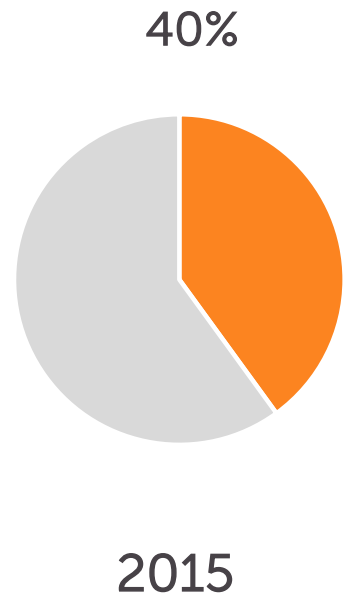
Contractors are unaware of their project performance

Solution

Issue scorecards to contractors to communicate performance of projects



Case Study: Attic Inspections



Challenge

Reduce costs and intrusiveness of QA/QC process

Solution

Use intelligent monitoring to reduce and target # of QA/QC inspections

APS shifted approximately 25% of the overall inspection budget to directly improve the program.

**All percentages are the percent of total annual projects (assumes 2,000 projects/year)*

How Can NH Pick Up M&V 2.0 Today

From the start, NH can begin in the lead

M&V 2.0 for EE Programs

- Support and enhance program evaluation and develop primary source data for a TRM

Calibrating savings

- Assess existing savings estimates in use today and calibrate values with local actual data

Oversee Complex Programs

- Start monitoring energy savings continuously to support program optimization.

Thank you

Jake Oster
Sr. Director, Regulatory Affairs
jake@energysavvy.com
802-598-1175